

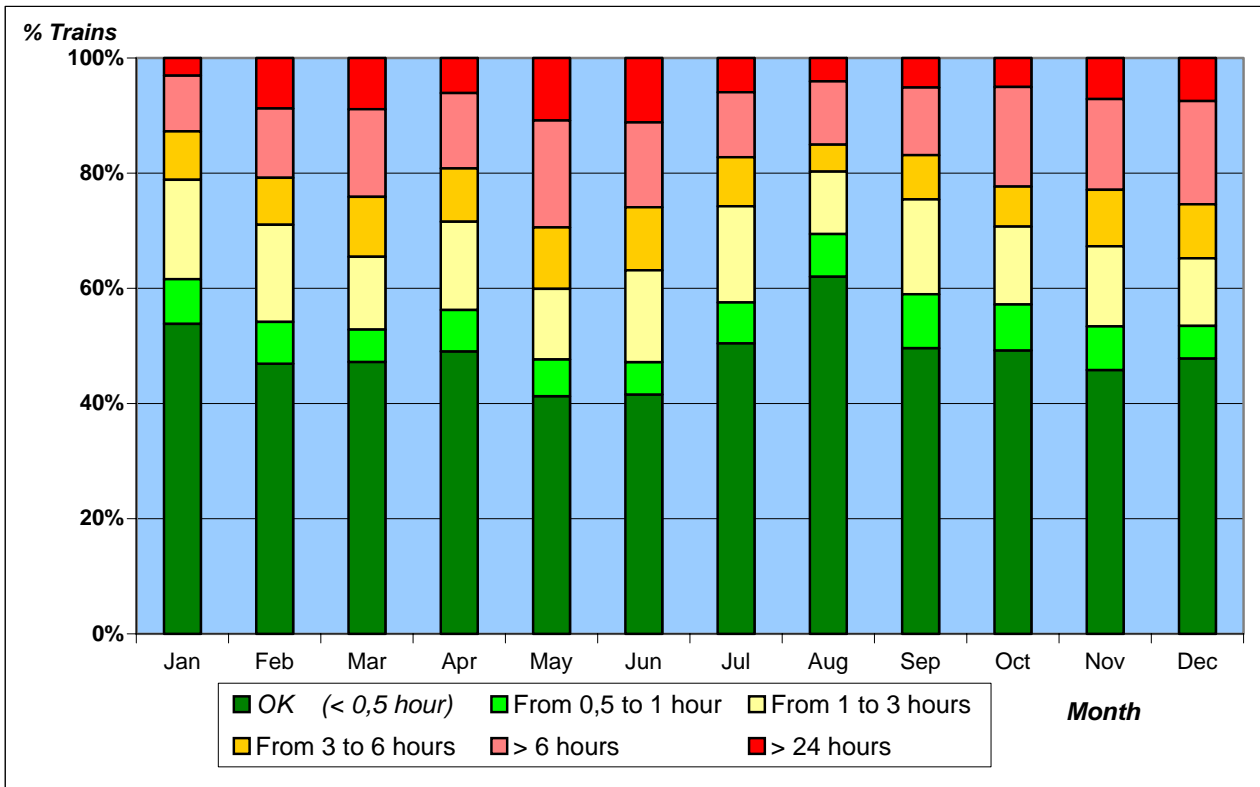


## Quality Statistics on major CT Corridors

### Punctuality / Delays

Unaccompanied traffic with swap bodies, containers and trailers

#### Year 2002: all observed axes (both directions)



Trains	Actual	OK	From 0,5	From 1	From 3	> 6 hours	> 24 hours
2002	Trains	(< 0,5 hour)	to 1 hour	to 3 hours	to 6 hours		
Jan	1726	929	134	298	145	167	53
Feb	1654	776	120	279	135	199	145
Mar	1709	807	96	216	178	260	152
Apr	1741	854	125	267	161	228	106
May	1686	696	108	206	180	313	183
Jun	1744	725	98	278	191	257	195
Jul	1868	942	133	312	159	211	111
Aug	1282	795	95	139	60	141	52
Sep	1755	871	164	289	135	206	90
Oct	1930	950	154	261	134	334	97
Nov	1783	817	135	248	175	281	127
Dec	1311	627	74	154	123	235	98
<b>Sum</b>	<b>20189</b>	<b>9789</b>	<b>1436</b>	<b>2947</b>	<b>1776</b>	<b>2832</b>	<b>1409</b>
<b>Part %</b>	<b>100%</b>	<b>48%</b>	<b>7%</b>	<b>15%</b>	<b>9%</b>	<b>14%</b>	<b>7%</b>

Punctuality: all trains with less than 30 minutes over scheduled arrival time (first unit ready for pick-up)

Railway companies involved: CFL, DB, EWS, FS, ÖBB, SBB, RAILION, RENFE, SNCB, SNCF

Relations	Trains	%
Belgium from/to Switzerland	1181	6%
Belgium from/to Spain	621	3%
Belgium from/to Italy via Luino	1339	7%
Belgium from/to Italy via Modane	1872	9%
Germany from/to Spain	3956	20%
Germany from/to Eastern Countries	1394	7%
Germany from/to Italy via Brenner	3908	19%
Germany from/to Italy via Gotthard	3863	19%
Great-Britain from/to Italy	497	2%
Italy from/to Netherlands	1558	8%
<b>Total</b>	<b>20189</b>	<b>100%</b>