

---

Company presentation

# Arad South Terminal



Linking road and rail

# Linking road and rail

—



## ABOUT US

# Your access to Western Romania

Afluent is en route to becoming a major intermodal terminal operator, with a key role in rail-freight access in the western part of Romania and in creating logistical and operational development opportunities.

We are strategically positioned along the European Rail Freight Corridor 7, with the possibility of vast expansion on our landholdings. This makes us the perfect partner for the future flow of goods across the Europe-Middle East route.

# Services

## Loading owned lines

Loading and unloading intermodal containers to/from the intermodal rail terminal.

## Intermodal container handling

Loading and unloading intermodal containers from trains (20'/40/ shipping containers, 45' continental containers for semitrailers, movable boxes and ISO containers).

## Goods handling

Loading and unloading goods to/from trains, intermodal containers or other means of transport.



## Container storage

Newly built platform for open-air storage of intermodal containers with a capacity of 500 TEU.

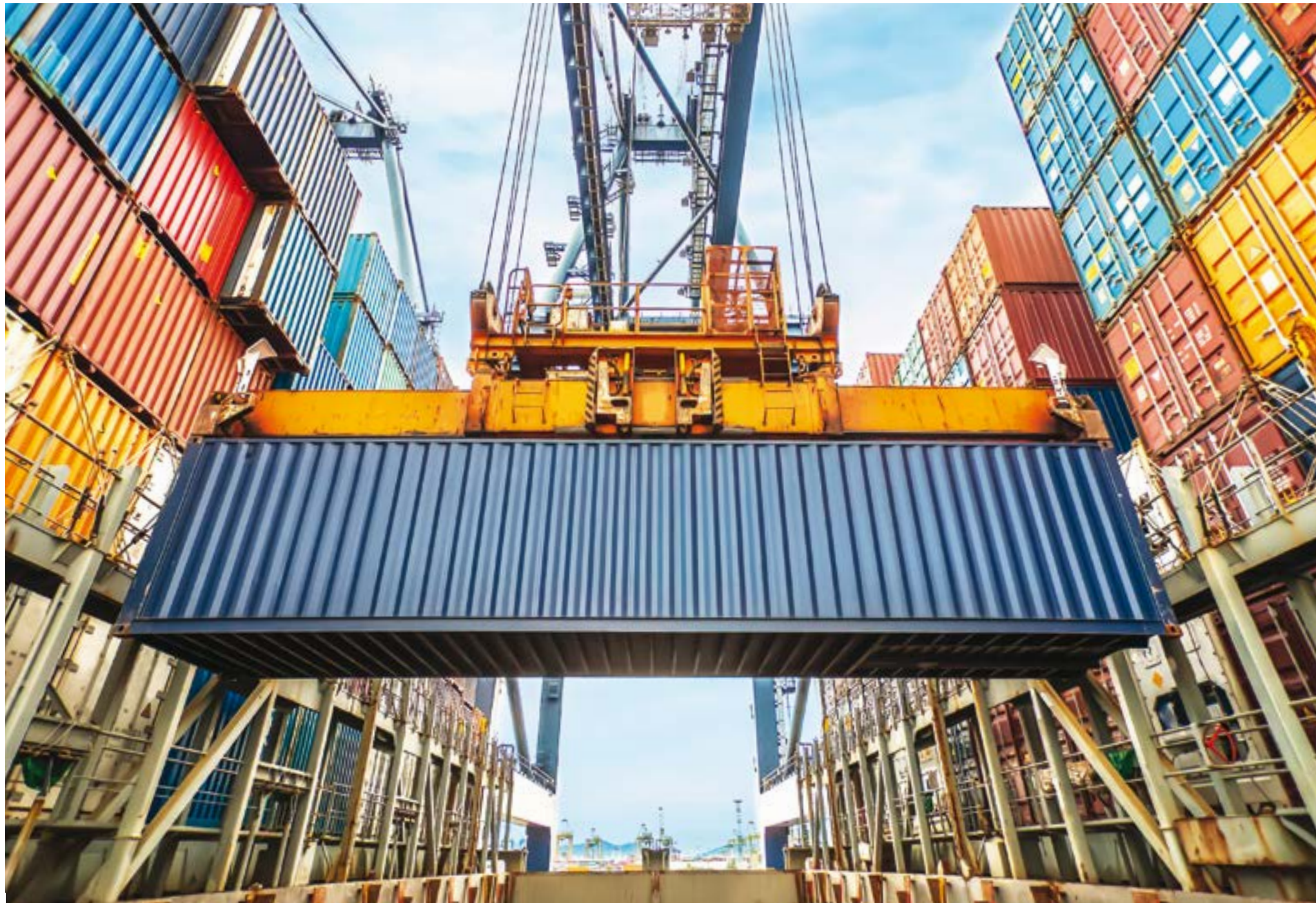
## Grain logistics

Loading grains onto intermodal containers, road transport, storage and customs formalities.

## Lorry parking services

Concrete platform for accessing and parking road freight vehicles, with a capacity of 200 semitrailers.





## VALUES

### Our values

#### **An ecologically sustainable alternative**

We are enthusiastic about the opportunities we bring to intermodal transport and its sustainable role in the future of transportation.

#### **Trust-based partnerships**

We are your competent and trustworthy partner, with heartfelt respect for customer relations, our partners and our employees.

#### **We rely on development**

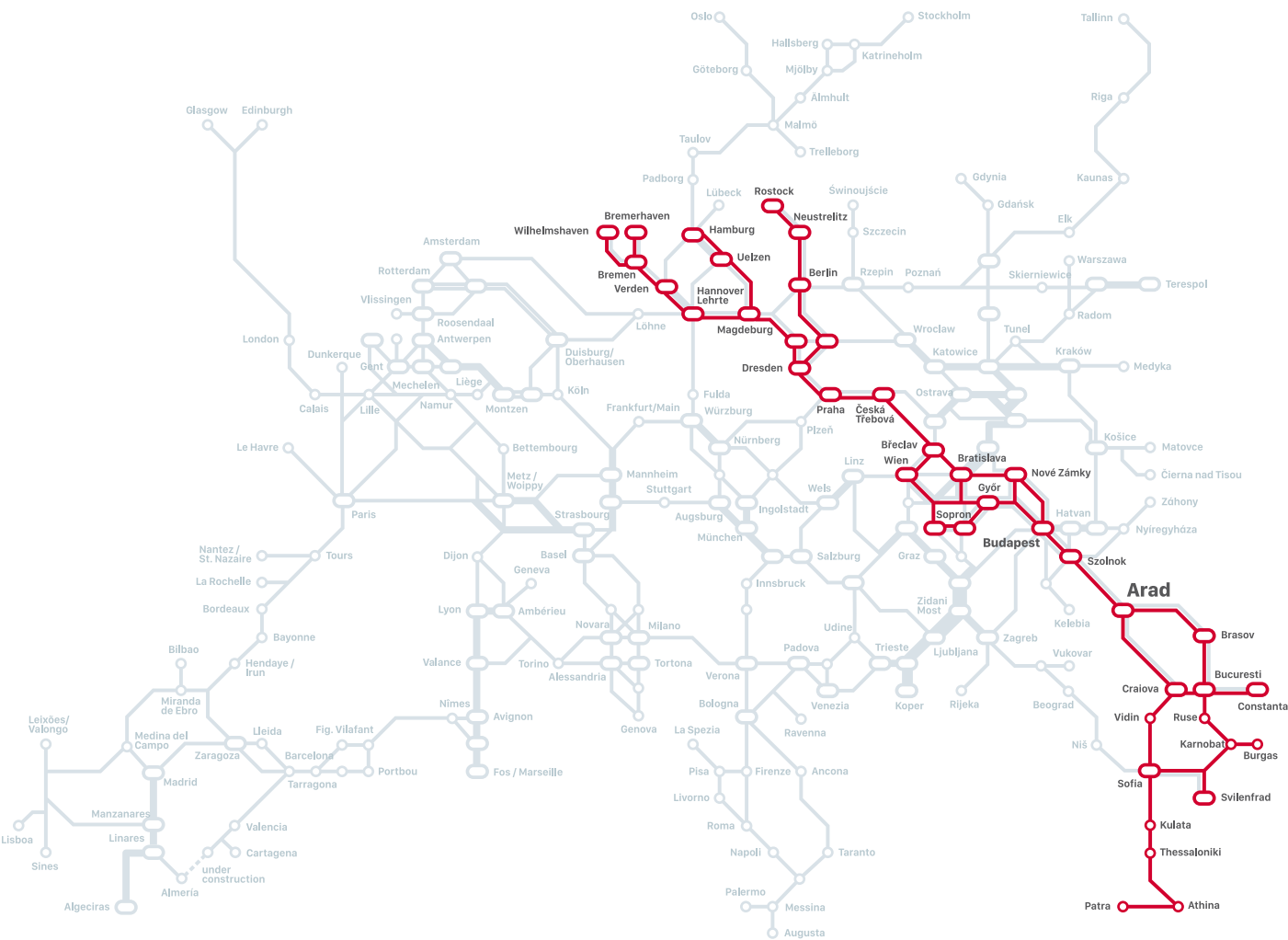
We are a modern, dynamic company that wants to contribute to the growth of the rail goods sector in Romania.



# Strategic positioning

## Modern infrastructure

We are located on a major European artery that links the North West and the South East of Europe.



Rail Freight Corridor 7



## Broad coverage area

### A combined transport alternative

The hub can accommodate customers within a 300 km range. Moreover, the truck + train combination is the best solution for customers with large volumes of goods that need to be transported over long distances.

# Development opportunities

---

**82 ha premises and other 420 ha available**  
The terminal is located on a 82 ha site with potential to develop logistics projects and another 420 ha available nearby for goods hubs or other production areas.



# A new approach

---

**Modern infrastructure and high-performing technology**  
Our business operates on a newly built platform with four rail lines for loading, measuring 350m in length. Operations are coordinated via a digitized system with two reach stackers (that can handle intermodal units up to 45 tonnes) and grain-loading equipment.



TEAM

# Background in successful projects

## Family – a solid foundation for future business

The terminal is a new business venture for the Oala family that has been successfully managing a large arable farm for nearly 20 years. The farm has an annual capacity of 10,000 tonnes and the possibility to expand storage for 1100 hectares of its harvest. The Arad South Terminal project was

initially planned as a grain terminal but captured the attention of players from various industries due to the countless advantages it had to offer. The family's reputation of being hard-working, reliable business people with strategic insight grants the project longevity, as part of Afluent's activity.



**Mircea Oala**  
Council of Administration  
Member



**Alin Oala**  
General Manager



**Nicoleta Oala**  
Commercial Manager



# Arad South Terminal



# Quick and easy access to all the major transport routes

The terminal is located in the south of Arad and has the advantage, alongside the vast possibilities for expansion in the immediate vicinity, of fast access to a motorway and an international E-road. It is also close to the industrial areas of two major towns in Western Romania, Arad and Timisoara.

- 1

**Intermodal Terminal**  
82 ha
- 2

**Land Extension**  
400 ha + 350 ha
- 3

**Valea Viilor Train Station**  
1.6 km
- 4

**A1 Motorway**  
2.9 km
- 5

**Arad International Airport**  
11.9 km
- 6

**“Traian Vuia” International Airport Timisoara**  
50 km
- 7

**Timisoara Industrial Area**  
43.9 km
- 8

**Arad West Industrial Area**  
18 km
- 9

**Timisoara**  
46.8 km
- 10

**Arad**  
5 km
- 11

**Curtici Customs**  
31.1 km
- 12

**Nadlac Customs**  
61.1 km





## Facilities for logistics operations

### Total area of the terminal

75000 sqm

### Temporary storage

750 TEU with possibility of immediate extension (3 rows x 3)

### Storage

500 TEU with possibility of immediate extension (5 rows x 4)

### Lorry / semitrailer parking area

200 units in spare parking area

### Operations

Intermodal units, semitrailers, grains, general goods

### Total number of tracks

4 x 350 m

### Total usable length

2000 m (including linkage)

### Reach stackers

2 x 45 t / 15 operations per hour

### Service areas

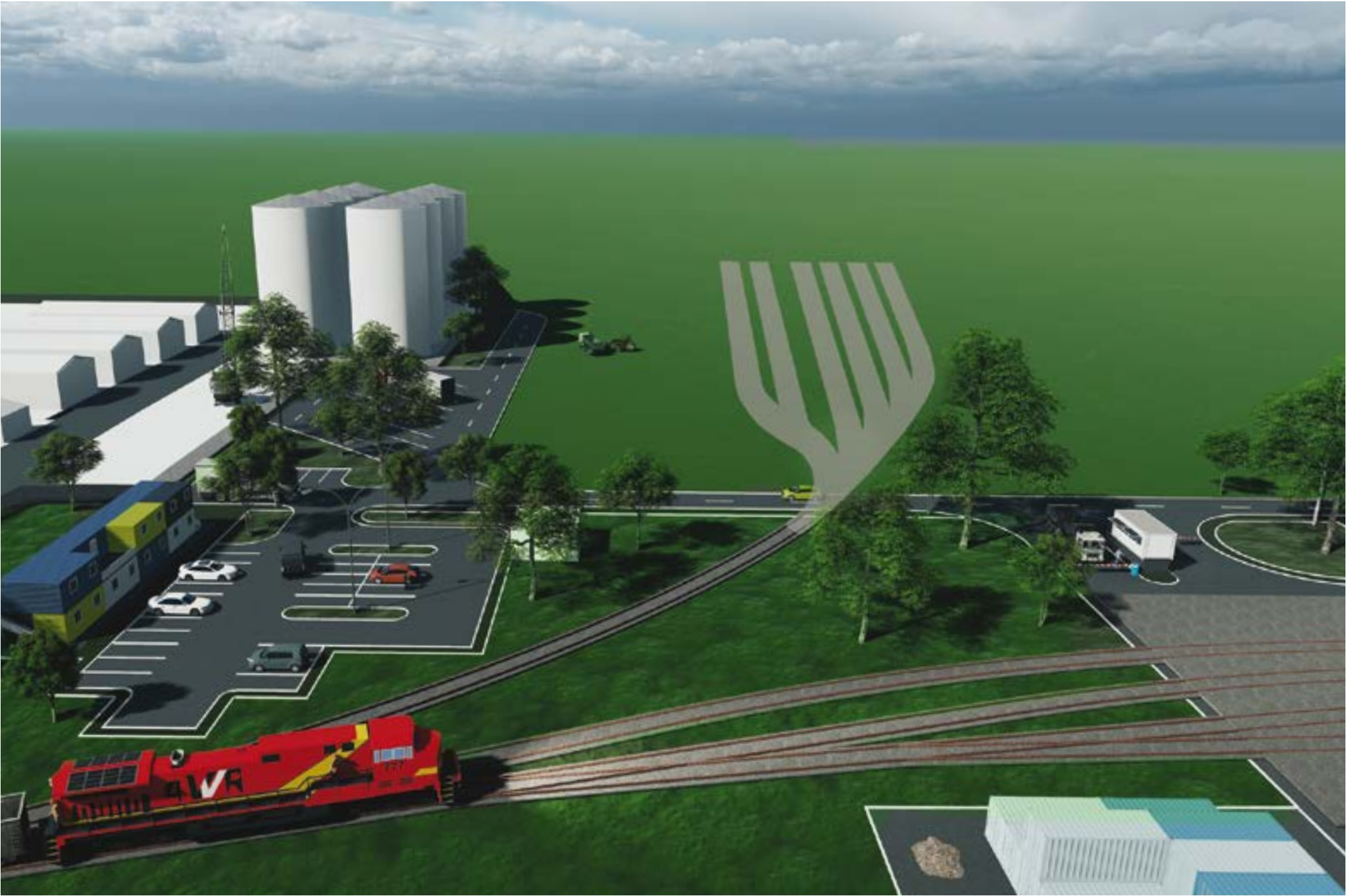
Offices, silos



# Plan for the future

## Further expansion

The second development stage is scheduled for 2023-26 and consists in building a new terminal with six 750m lines, a logistics centre for storage and distribution and transshipment facilities for general goods and intermodal containers, with a capacity of up to 82 hectares.



OUR CLIENTS

# Train operators

In addition to our presence on an important, modernised rail freight corridor, our major asset is positioning, which grants quick access to the motorway and proximity to the industrial areas of the cities of Arad and Timisoara.

We are equipped to quickly and efficiently handle containers while offering a safe, comprehensive storage service for all types of intermodal containers, with huge capacity for expansion.



OUR CLIENTS

# Freight forwarding agencies

Our excellent position on the rails as well as on a local and regional level, allows us to be a cost-effective, efficient transport alternative that plays a role in optimizing the supply chain.

Apart from the comprehensive intermodal container handling service, our terminal incorporates a large area of land with multiple facilities which allow the development of goods hubs for our partners.





# Major producers

Our aim is to simplify the logistic processes of major producers, offering them cost-effective modularity for the safe and sustainable transport of raw materials, parts or finished goods in high volumes and over long distances.

The last-mile alliances with our road freight associates allow us to cover the whole process in the customer-supplier journey and provide optimal operating times.



# Hauliers

We are offering road hauliers an alternative that will reduce their operational costs - fuel, environmental taxes, staff – and allow them to benefit from the financial support available through the EU future of transport initiative.

We provide good quality storage space for various container types – semitrailers, tank-containers, reefers and movable boxes ensuring their security inside the terminal on a 24-hour basis.



# Efficient Solutions

The terminal provides all the necessary conditions for efficient logistics.

 <p>Top quality equipment</p>	 <p>Silos and storage platforms</p>	 <p>Offices for operational staff</p>
 <p>Customs</p>	 <p>Rail operations</p>	 <p>Digitized system</p>
 <p>Last-mile operations</p>	 <p>Compatibility with various types of semitrailers</p>	 <p>24/7 monitoring and patrols</p>





[www.afluent.com](http://www.afluent.com)

[office@afluent.com](mailto:office@afluent.com)

Km. 10 Timisorii Street, Sagu, Arad, Romania