

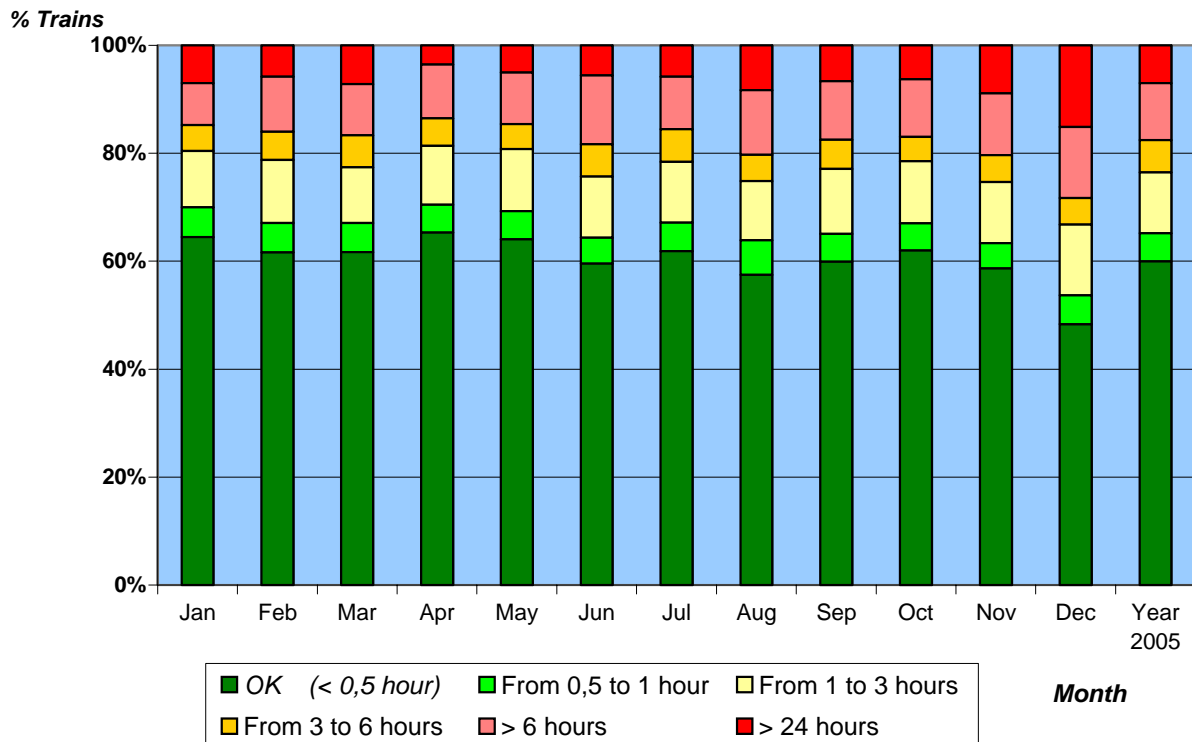


# WITHOUT BRENNER AND AUSTRIAN TRAFFIC

## Quality Statistics on major CT Corridors Punctuality / Delays

Unaccompanied traffic with swap bodies, containers and trailers

### Year 2005: all observed axes (both directions)



Trains 2005	Actual Trains	OK (< 0,5 hour)	From 0,5 to 1 hour	From 1 to 3 hours	From 3 to 6 hours	> 6 hours	> 24 hours
Jan	1523	982	84	159	73	118	107
Feb	1650	1017	90	193	86	168	96
Mar	1693	1044	92	174	101	161	121
Apr	1800	1175	93	197	92	179	64
May	1720	1102	90	197	80	164	87
Jun	1771	1055	85	200	106	226	99
Jul	1884	1166	99	212	114	183	110
Aug	1232	708	79	135	60	148	102
Sep	2129	1276	109	256	115	232	141
Oct	2024	1255	102	232	92	216	127
Nov	1980	1161	93	224	99	227	176
Dec	1746	844	93	229	86	230	264
<b>Sum</b>	<b>21152</b>	<b>12785</b>	<b>1109</b>	<b>2408</b>	<b>1104</b>	<b>2252</b>	<b>1494</b>
<b>Part %</b>	<b>100%</b>	<b>60%</b>	<b>5%</b>	<b>11%</b>	<b>6%</b>	<b>11%</b>	<b>7%</b>

Punctuality: all trains with less than 30 minutes over scheduled arrival time (first unit ready for pick-up)

Railway companies involved: CFL, DB, EWS, FS, ÖBB, SBB, RAILION, RENFE, SNCB, SNCF

Relations	Trains	%
Belgium from/to Switzerland	978	5%
Belgium from/to Spain	981	3%
Belgium from/to Italy	4514	21%
Belgium from/to Italy via Modane	203	1%
France from/to Italy	2515	12%
Germany from/to Spain	4174	20%
Germany from/to Eastern Countries	873	4%
Germany from/to Italy via Brenner	0	0%
Germany from/to Italy via Gotthard	4624	22%
Italy from/to Netherlands	2290	11%
	<b>21152</b>	<b>100%</b>