

Telematics Applications for Freight TAF TSI / EDICT

UIRR - EDICT Digital Event , Munich Transport Logistic Fair

10 May 2023, Online



European COMMISSION IMPLEMENTING REGULATION (EU) N° 2021/541 of 26 March 2021 amending Regulation (EU) No 1305/2014 as regard the simplification and improvement of data calculation and exchange and the update of the Change Control Management process*



* <https://eur-lex.europa.eu/legal-content/EN/TXT/PDF/?uri=CELEX:32021R0541&from=EN>

TAF TSI functions Regulation (EU) 2021/541



Reference data
for rail loctions and for companies



Railways > Infrastr. Managers communication

- Path request
- Train composition
- Train ready
- Train run and forecast
- Service disruption

Railways > Railways communication

- Consignment order
- Wagon events
- Estiamted time of interchange
- Estiamted time of arrival

Wagon keepers

- Rolling stock reference database

Terminals

- Consignment order
- Train composition
- Train ready
- Train run and forecast
- Service disruption
- Estimated time of interchange
- Estimated time of arrival

TAF TSI process Regulation (EU) 2021/541

Planning...

Operation...

After...

Consignment
Note

Path
Request

Train
Preparation

Train
Running
Forecast

Wagon
Movement

Post-Trip

- Wagon loads
- Wagon release

- Open
Access

- One Stop
Shop

- Train
Composi-
tion

- Train ready

- Train
Running
and
forecast

- Service
Disruption

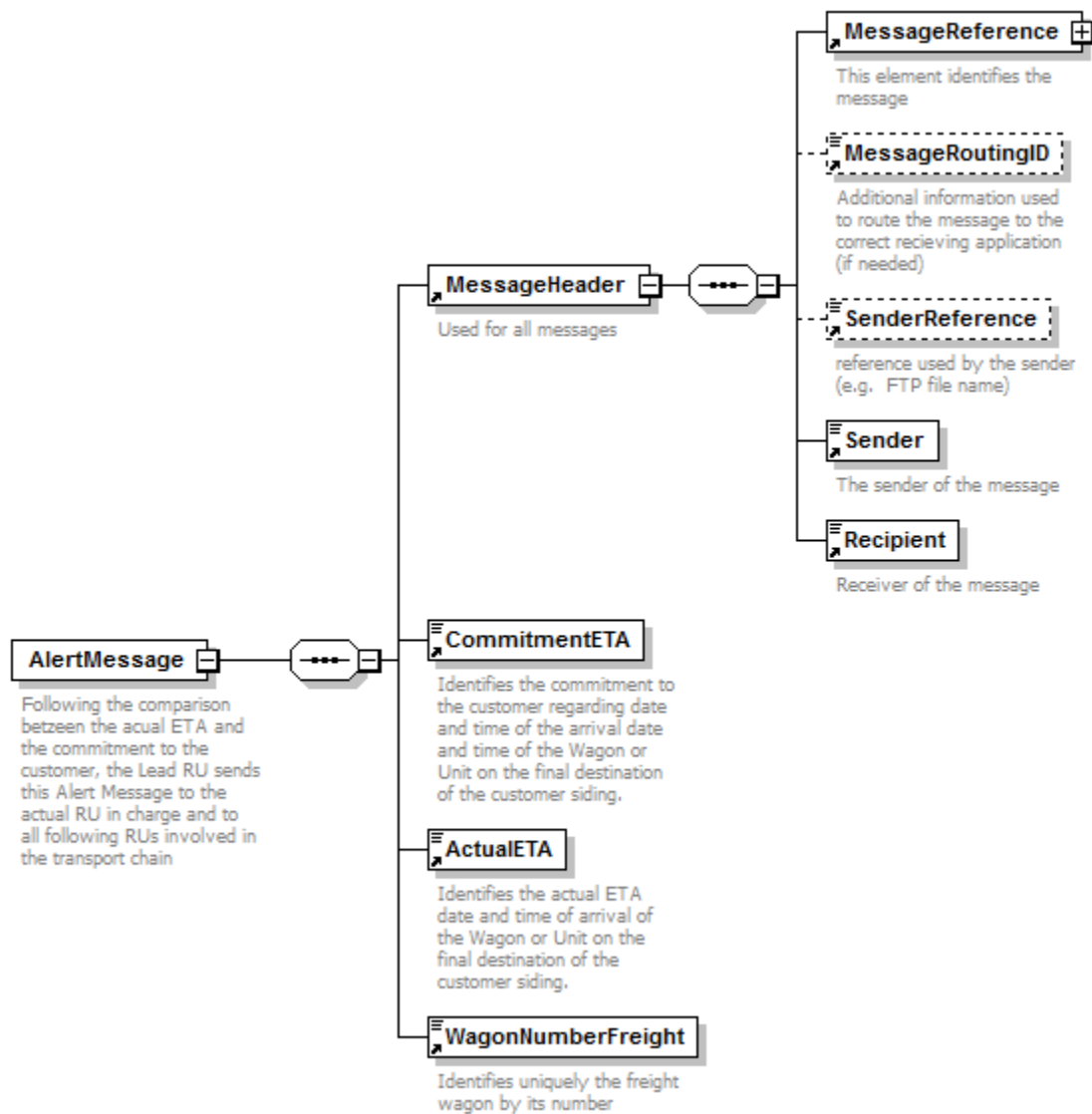
- Estimated Time
of Arrival (ETA)
or of Inter-
change (ETI)

- Wagon events

- To improve
the quality
and producti-
vity



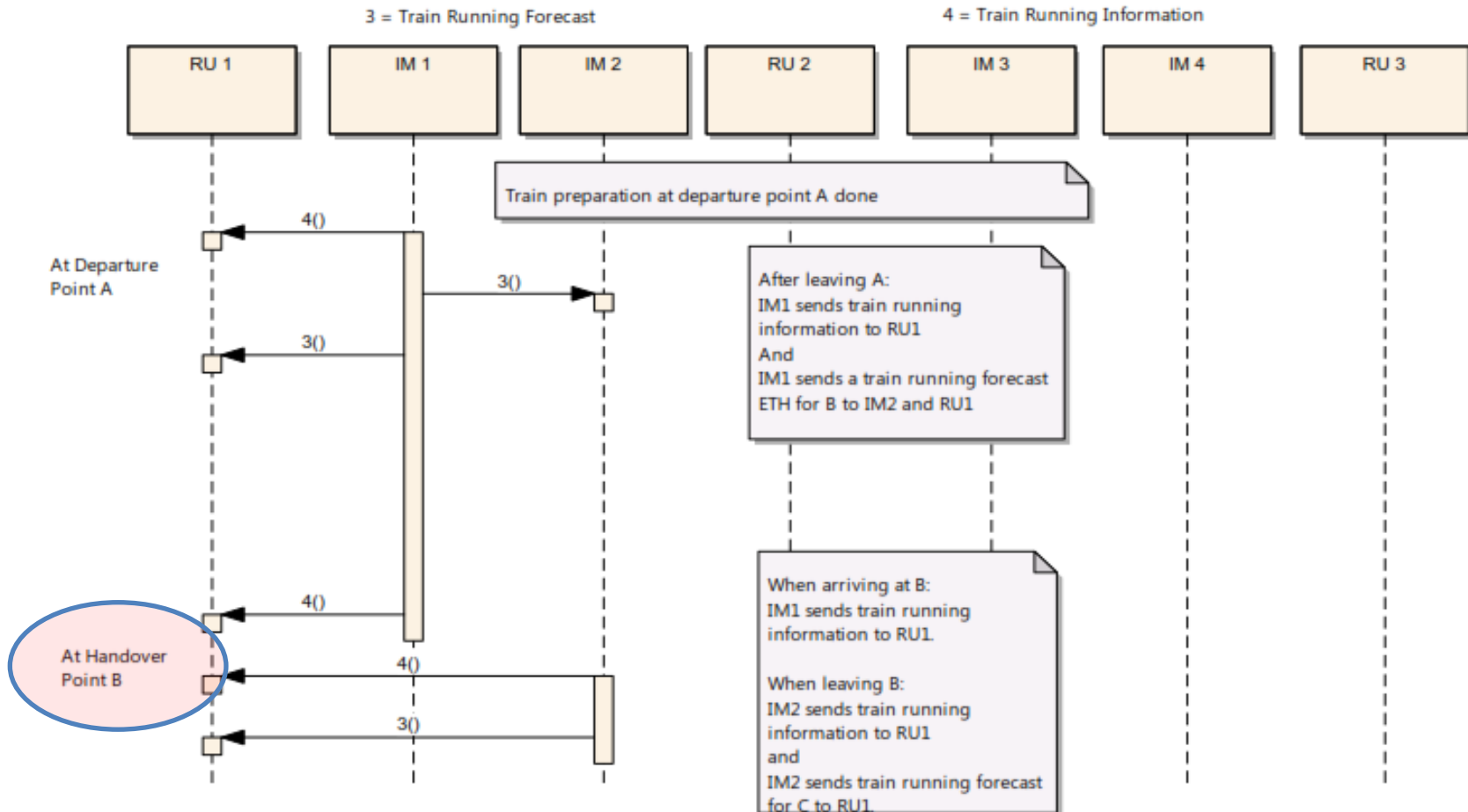
Content of TAF Technical Document – XSD definition



Realisation of TAF Technical Document – XML message

```
<?xml version="1.0" encoding="UTF-8"?>
<!--Sample XML file generated by XMLSpy v2017 sp2 (x64) (http://www.altova.com)-->
<ns1:AlertMessage xmlns:xsi="http://www.w3.org/2001/XMLSchema-instance" xmlns:ns1="
http://www.era.europa.eu/schemes/TAFTSI/2.1" xsi:schemaLocation="http://www.era.europa.eu/schemes/TAFTSI/2.1
taf_cat_complete_baseline_2.1.xmd.xsd">
  <ns1:MessageHeader>
    <ns1:MessageReference>
      <ns1:MessageType>5007</ns1:MessageType>
      <ns1:MessageTypeVersion>2.1</ns1:MessageTypeVersion>
      <ns1:MessageIdentifier>12345</ns1:MessageIdentifier>
      <ns1:MessageDateTime>2017-12-17T09:30:47Z</ns1:MessageDateTime>
    </ns1:MessageReference>
    <ns1:MessageRoutingID>01</ns1:MessageRoutingID>
    <ns1:SenderReference>ftp://eleta.com/upload</ns1:SenderReference>
    <ns1:Sender ns1:CI_InstanceNumber="1">1088</ns1:Sender>
    <ns1:Recipient ns1:CI_InstanceNumber="1">1084</ns1:Recipient>
  </ns1:MessageHeader>
  <ns1:CommitmentETA>2017-12-17T11:35:00Z</ns1:CommitmentETA>
  <ns1:ActualETA>2017-12-17T12:45:00Z</ns1:ActualETA>
  <ns1:WagonNumberFreight>841234567890</ns1:WagonNumberFreight>
</ns1:AlertMessage>
```

TAF TSI – EU 1305/2014 -> Process (sequences) ?



EDICT	TAF TSI	Status
<p>The overall objective of the EDICT project is to remove interoperability barriers for TAF TSI-related CT messages by implementing data exchange with identifiable and eligible stakeholders.</p>	<p>The TSI describes the use (sequences) and message content (XSD/XML) for Consignment order, Train composition, Train ready, Train run and forecast Service disruption, Estimated time of interchange, Estimated time of arrival, share reference objects etc.</p> <p>CT actors are included in Glossary and Legal text.</p>	<p>✓</p> <p>✓</p>
<p>Goal 1: Implementation of electronic data exchange between terminals and the rail sector, including the definition of harmonized timestamps, adaptations of Terminal Operating Systems (TOS), and design of a common and standardized interface for terminals.</p>	<p>Link real multimodal time data and train data (with new Appendix IV for ETA)</p> <p>Facilitation of Combined Transport (with ILU database) with link to eFTI.</p> <p>Better data access for first and last mile actors</p>	<p>✓</p> <p>✓</p> <p>✓</p>

EDICT	TAF TSI	Status
<p>Goal 1 (cont.): Implementation of electronic data exchange between terminals and the rail sector, including the definition of harmonized timestamps, adaptations of Terminal Operating Systems (TOS), and design of a common and standardized interface for terminals.</p>	<p>Revised milestones for implementation of amended legal text towards timetable 2027 (new TAF “Master Plan”).</p> <p>Adaption of the CT related TAF XML messages in the ERA Change Control Management (such as new ILU Database Set).</p> <p>Use of CT specific (however TAF TSI “soft” compliant) messages such as EDIGES.</p>	<p><input checked="" type="checkbox"/></p> <p><input checked="" type="checkbox"/></p> <p><input checked="" type="checkbox"/></p>

EDICT	TAF TSI	Status
<p>Goal 2: Development of a common Quality Management System for European Combined Transport, scheduled regularly running (non-ad hoc) rail freight operations (Q-ELETA), including the development of a methodology to devise milestones/time stamps of the production process, harmonized delay/irregularity codes, and a view to improving CT performance, in particular punctuality.</p>	<p>Link real multimodal time data and train data (with new Appendix IV for ETA).</p> <p>Possibility to keep available (by IM) train running information (ID, reporting location, actual vs. planned date/time, delay and delay cause) for complaint purposes of freight customers.</p>	<p><input checked="" type="checkbox"/></p> <p><input checked="" type="checkbox"/></p>

EDICT	TAF TSI	Status
<p>Goal 3: Initiating data exchange with new stakeholders, particularly end-customers such as shippers, Logistics Service Providers, and freight forwarders, including the integration of Estimated Time of Pick-up Time (ETP) based on train ETA, extension of the successful market solution CESAR for tracking and tracing, development of registers, and promotion of existing applications such as KV 4.0, a data hub for Combined Transport.</p>	<p>To be developed in future TAF revision (Implementation of geolocation tracking of vehicles, ETP etc).</p>	<p><input checked="" type="checkbox"/></p>

- https://www.era.europa.eu/activities/technical-specifications-interoperability_en
 - TAF TSI regulation
 - TAF TSI Implementation, master plan and guidance
- <https://www.era.europa.eu/content/compliance-reports>
 - TAF TSI documents / XSDs (in baselines !)
 - TAF TSI Compliance reports
- <http://teleref.era.europa.eu/>
 - TAF TSI Reference Files (Company Codes and Primary Location Codes)



Making the railway system work better for society.

Follow us on Twitter: [@ERA_railways](https://twitter.com/ERA_railways)