



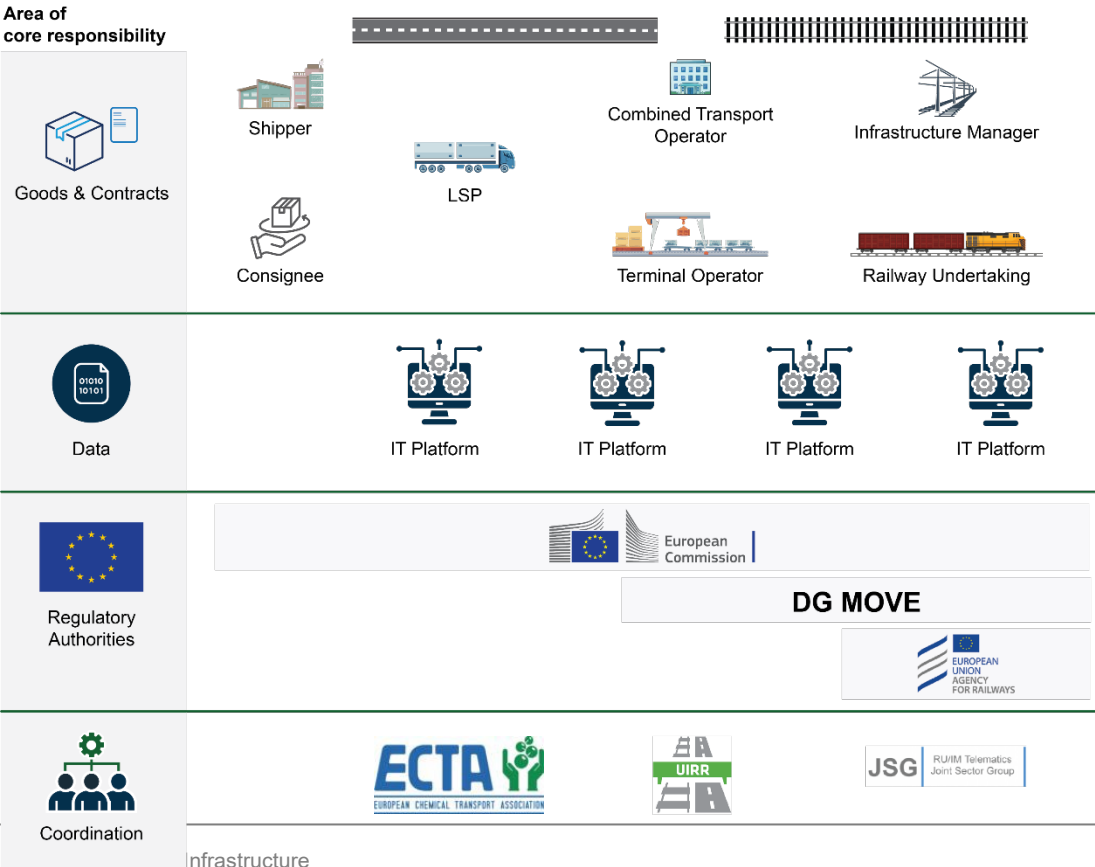
**HAMBURG PORT AUTHORITY**

**Railway Infrastructure**

Organizing Efficient Rail Freight Logistics between Port and Hinterland

Wolf-Jobst SIEDLER

# Statement: What do Combined Transport Maritime actors need?



## Hamburg Port Authority

Role

Port Authority

# locations: 1



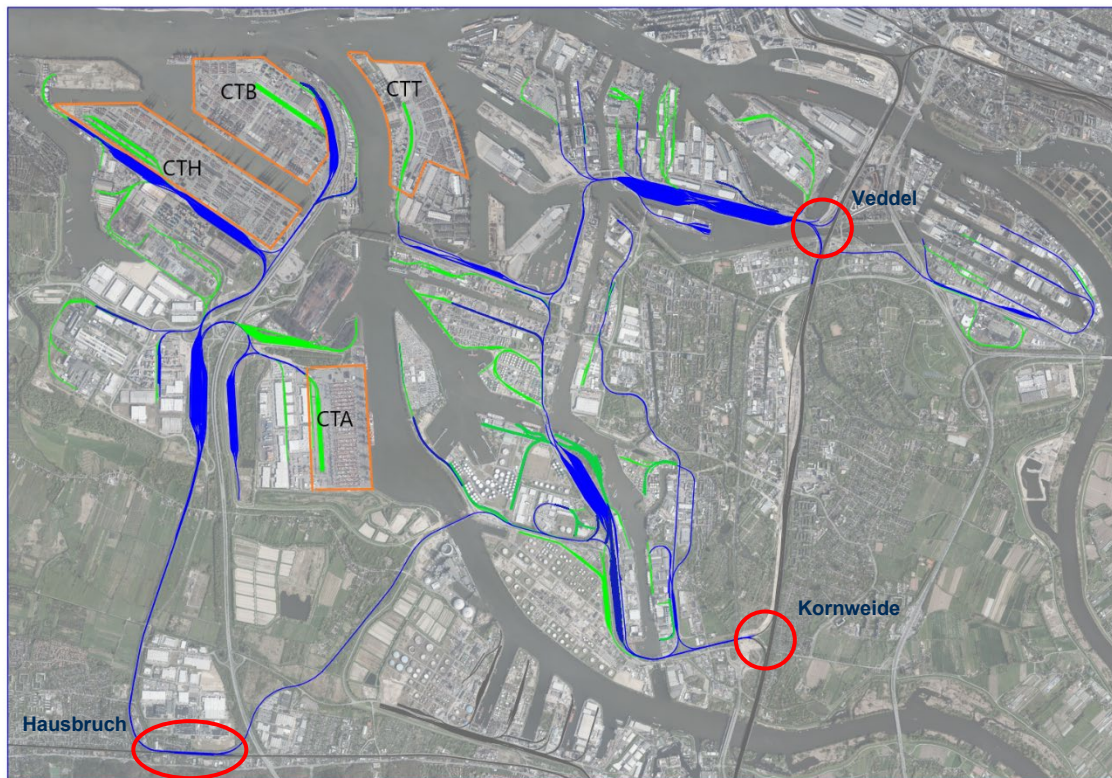
Key Activities

1. Railway Service Facility Traffic Management
2. Rail Port Community System Operator
3. Infrastructure Maintenance

Key Figures


# Trackwork operated: 300 km  
 # Trains handled (p.a.): 75k  
 # Rail freight shipped (p.a.): 45 Mio. t


# Public and Private Rail Infrastructure within the Port of Hamburg



© HPA-Kartographie

## Rail Infrastructure

 300 km of tracks, including 6 shunting yards of HPA (publicly owned)

 77 private sidings / tracks on terminal areas (private enterprises)

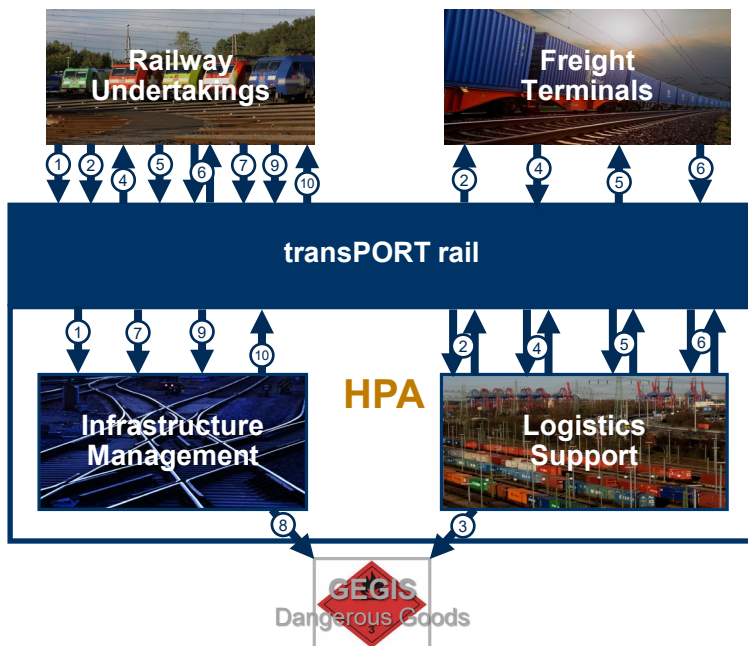
 Connection points to national network

## Selection of terminals (private enterprises)

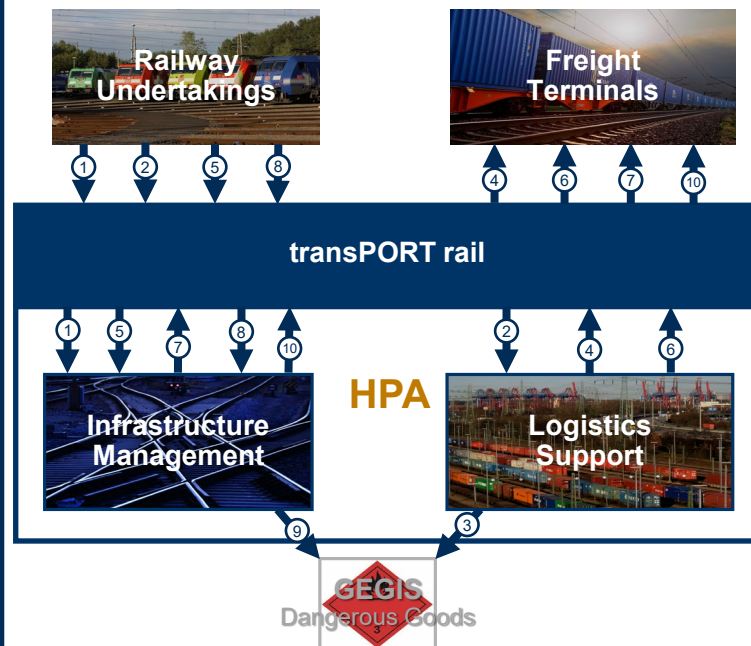
 Container terminals



## Outbound (Import)



## Inbound (Export)



## Major Business Objects

### Export/Inbound Rail Traffic

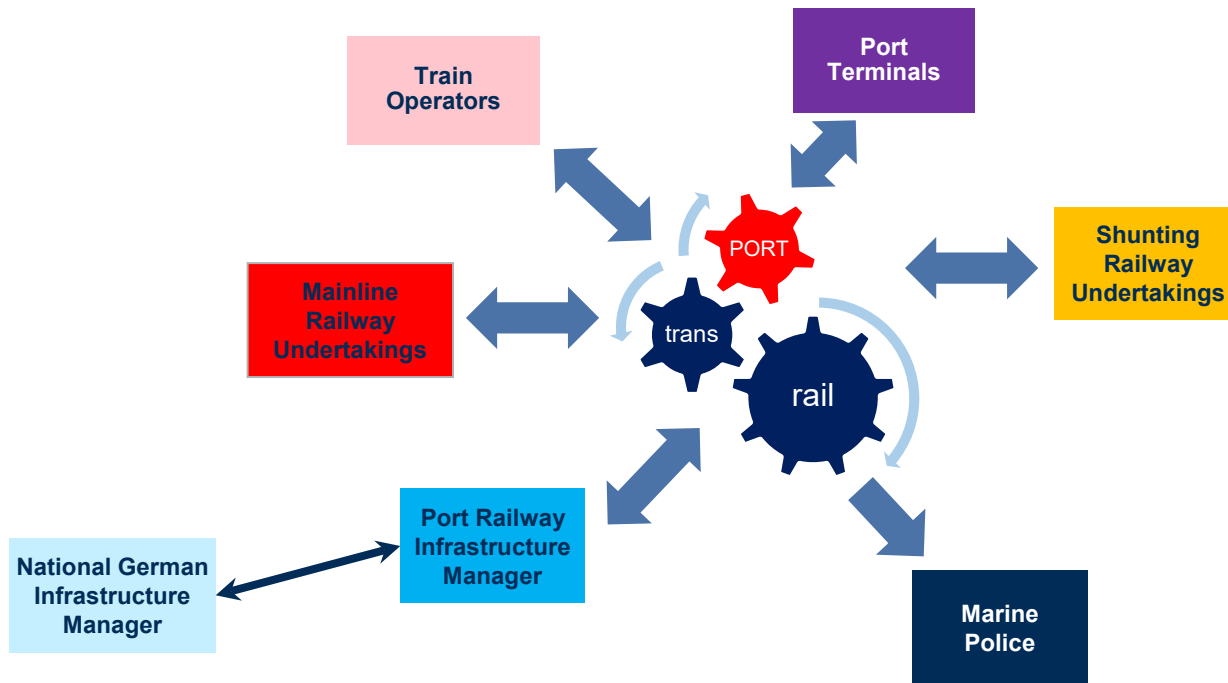
- 1 Inbound train composition
- 2 Inbound consignment orders
- 3 Dangerous goods registration (with M.P.)
- 4 Advance arrival notification
- 5 Check on arrival
- 6 Arrival notification
- 7 Train status
- 8 Shunting moves
- 9 Dangerous goods location updates (with M.P.)
- 10 Shunting wagon composition

### Import/Outbound Rail Traffic

- 1 Outbound train composition
- 2 Outbound consignment orders
- 3 Dangerous goods registration (with M.P.)
- 4 Cargo availability
- 5 Loading plan
- 6 Loading confirmation
- 7 Shunting moves
- 8 Dangerous goods location updates (with M.P.)
- 9 Outbound mainline train formation
- 10 Outbound train departure

# Rail Port Community System

Sharing and working together



Thank you for your attention!



© HPA, Andreas Schmidt-Wiethoff

## **Hamburg Port Authority AöR**

Wolf-Jobst Siedler

Neuer Wandrahm 4

20457 Hamburg

Tel.: +49 40 42847-1848

E-Mail: [wolf-jobst.siedler@hpa.hamburg.de](mailto:wolf-jobst.siedler@hpa.hamburg.de)