



## EcoHubs vision

Dr. Fernando Caldeira-Saraiva

Research Director

BMT Group Ltd

# Drivers of the future



- Economic evolution
- Policy
- User needs

# Economic evolution



- Distances increasing
- Tonnage decreasing
- Stagnation
- Improved services



# User needs



- Intermodal operators
- Railway
- Trucking & logistics companies
- Shipping & consignors

# Policy



- TEN
- Freight Action Plan
- Reg 913/2010
  - Green Corridors
  - overall footprint
  - cooperation
  - interoperable systems
  - TAG

# Terminal of the future



- links
  - rail & trucks
  - logistics services
  - maintenance & repair
  - agency ....
- full insertion
  - flexible IT solutions
  - resilience
  - rapid reaction

# What is needed?



- Collaboration
- IT
- Greening
- Measurement

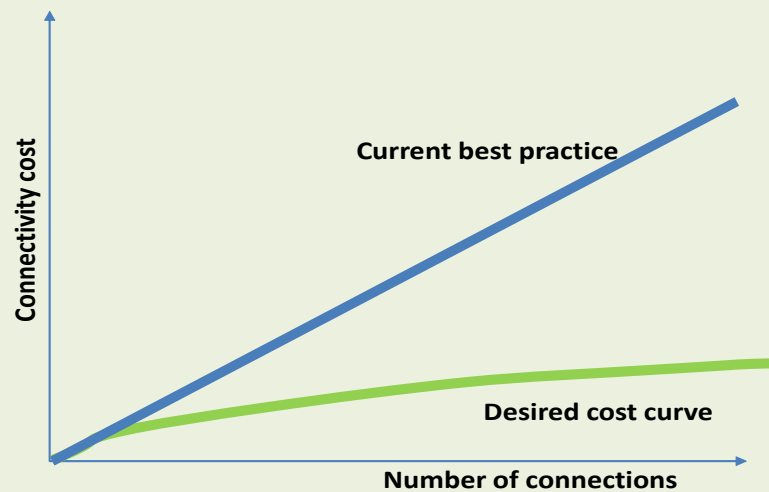
# Collaboration



- assets
- external resources
- bundling
- information sharing

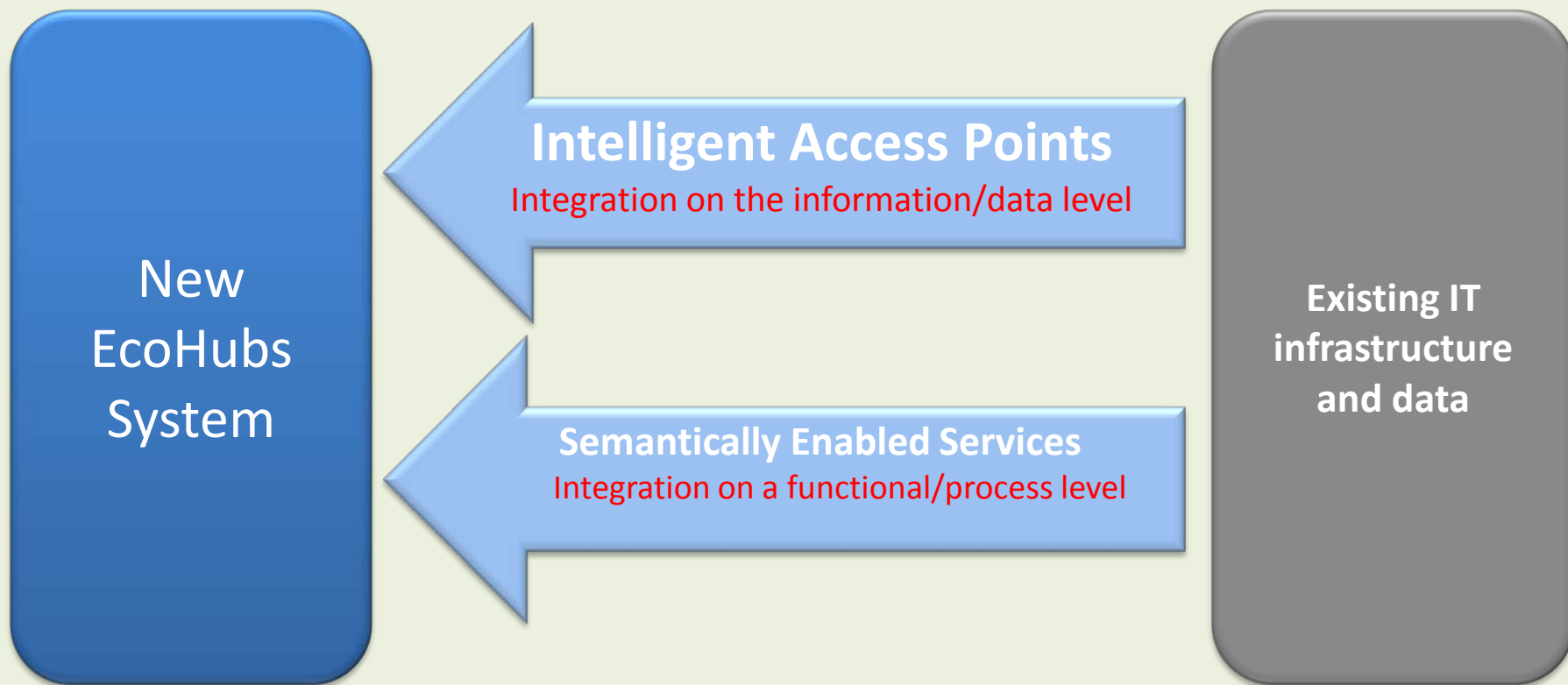


# IT





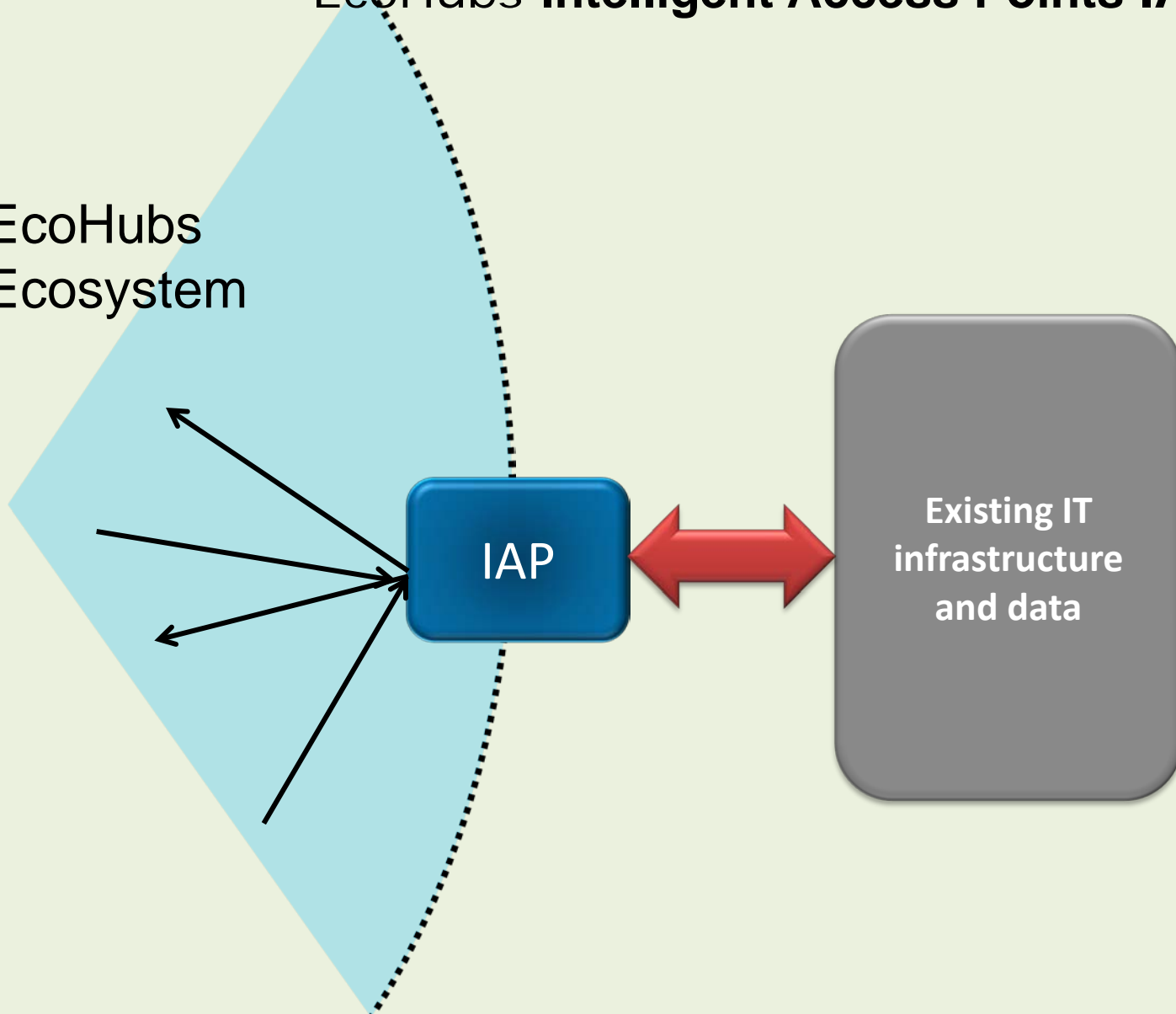
EcoHubs will develop two mechanisms through which end-users can connect to and/or become part of the EcoHubs Ecosystem





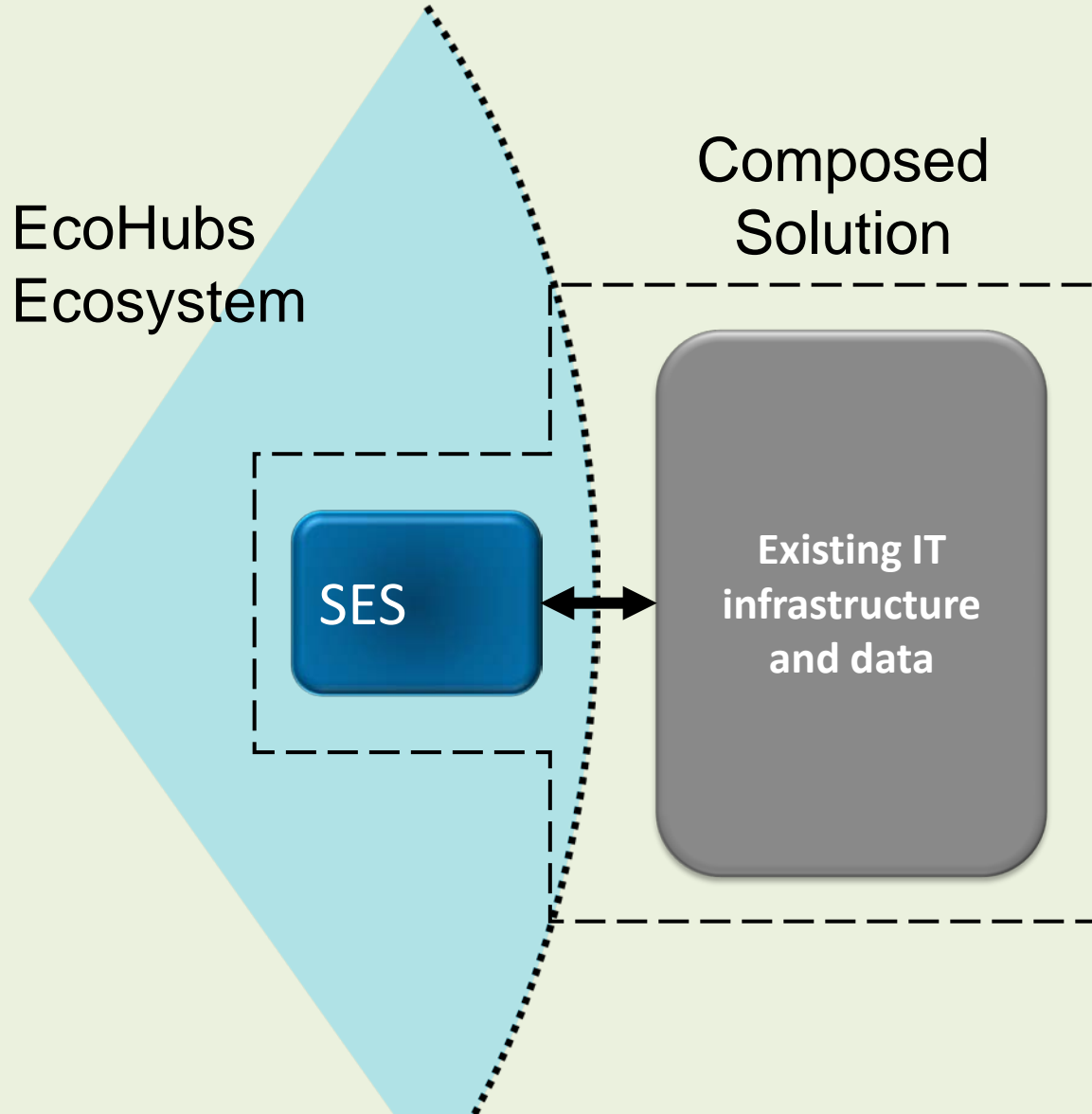
# EcoHubs Intelligent Access Points IAP

EcoHubs  
Ecosystem





# Semantically Enabled Services SES



# CO<sub>2</sub> assessment



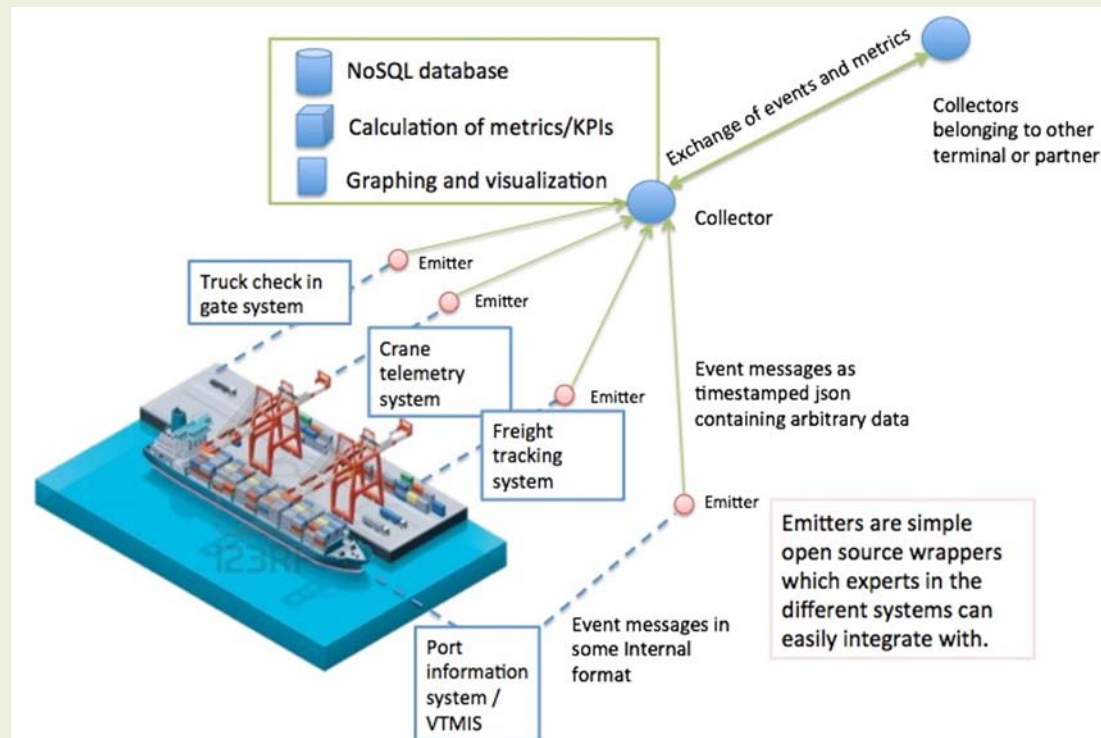
- static
- updating
- linking

# Measuring



- what are the benefits?
- how can we do better?
- automatic data capture
- flexibility

# Measuring



# Demonstrators





# Agenda



9:45 - 10:00	Welcome	All
10:00 – 10:15	EcoHubs: Introduction	Mr. Caldeira BMT / Coordinator
10:15 - 10:45	Demonstration I ITEC (eco-efficiency calculator for terminals)	Mr. Deiterding HaCon
10:45 - 11:15	Demonstration II CCIS - Container consolidation and Interfacing System	Mr. Pedersen Marlo
11:15 - 12:00	Demonstration III ecoTAurus - truckink system appointment	Mr. Kouloumbis Inlecom
12:00 - 12:20	Demonstration IV MetricHub - a system for exchanging data	Mr. Hodgson BMT
12:20 - 12:50	Demonstration V The IBI demonstrator	Mr. Aulicino IBI
12:50 - 13:00	Conclusions and closure of the workshop	Mr. Caldeira BMT / Coordinator