



WELCOME TO THE WEBINAR ON



RAIL FACILITIES PORTAL



Opening speech

Kristian Schmidt

Director, Land Directorate, DG MOVE, European Commission



Opening speech

Linda Thulin

Trafikverket, Vice President of RNE
in charge of Sales Management.



Introduction to the RFP



Video

<https://railfacilitiesportal.eu/manuals/RailFacilitiesPortal-Video.mp4>

— RFP – Portal Management Structure



Co-financed by the Connecting Europe
Facility of the European Union



*To coordinate service facilities
operated by its Members*



*To coordinate all other service
facilities*

Portal Management

System Management

- Development plan
- Hardware
- System
- Interfaces

Data Management

- Data collection
- Data quality management
- User support
- User training for SF operators

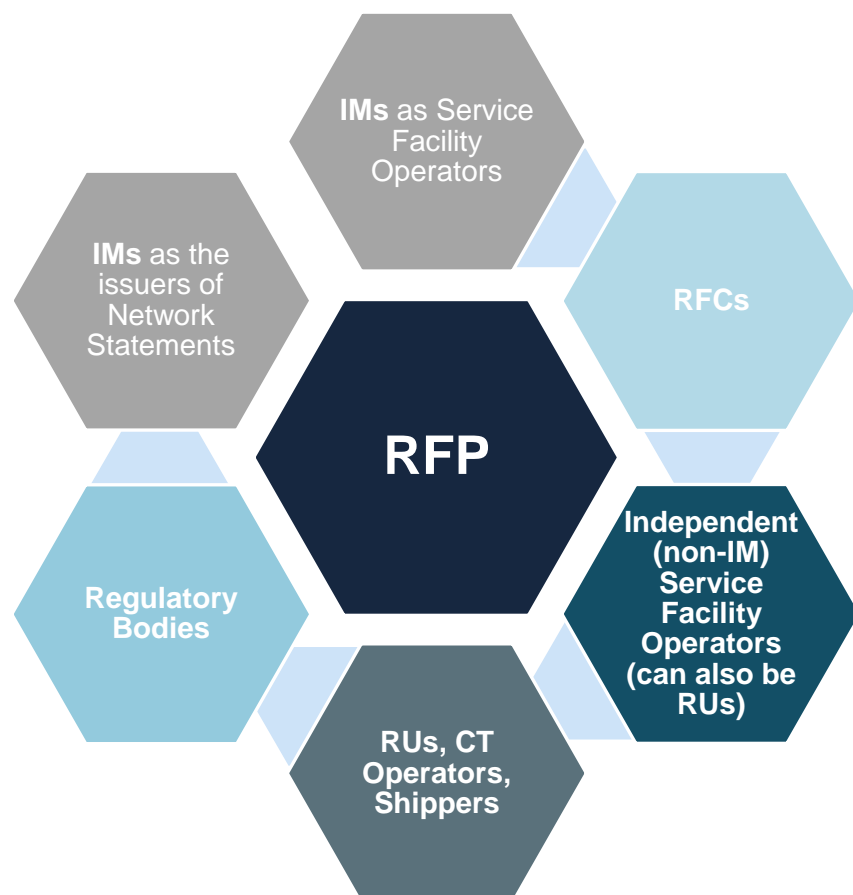
Stakeholder Management

- Identifying, managing their needs, increasing their commitment
- GB and TCB meetings
- Reporting

Communication and Promotion

- Communication plan
- Dissemination events
- Promotion materials

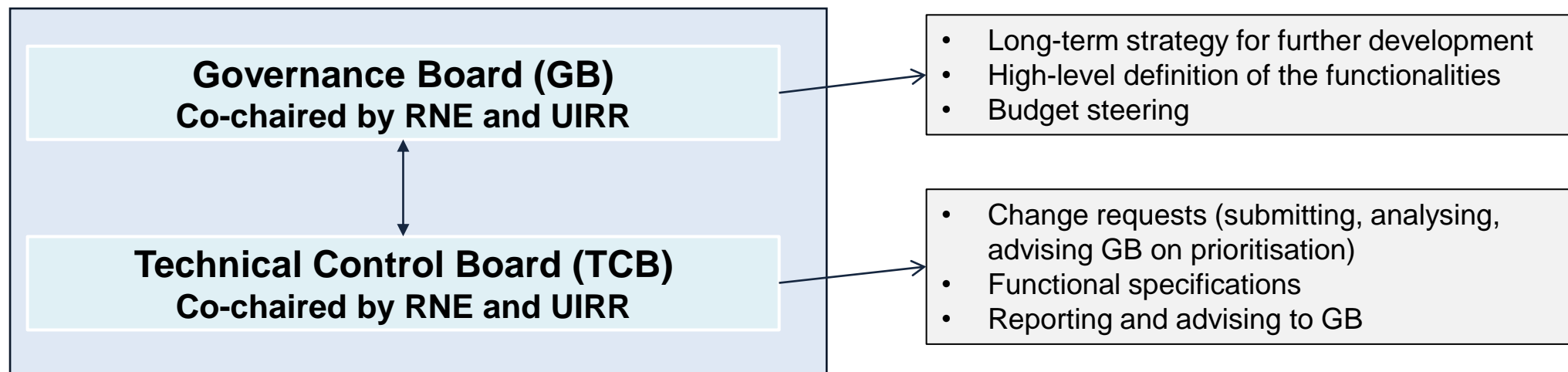
— RFP – Multitude of Involved Stakeholders



Numerous stakeholders:

- **Feeding the RFP** ('data providers'):
presenting their facilities and services and fulfil their legal obligations to make information available
- **Using the information** ('data users'):
facilitating the efficient planning of transport and logistics chains for freight operators, as well as assist efficient enforcement (for RBs)

— RFP – Governance Structure



— Already highly supported by some important sector stakeholders

"I would like to invite all rail transport stakeholders to use the Portal and to explore its functionalities. "

"IRG-Rail welcomes the initiative of a common portal for rail facilities."

"Digitalisation of SF information is an important step to ensure further simplification and efficiency."

IRG-rail
Independent Regulators' Group - Rail



Panel discussion 1

Stakeholders' experience with and expectations towards the RFP



Panel discussion 1

Eric Lambert

Chairman of the Combined Transport Group,
UIC



Panel discussion 1

Filipe Pina

Head of Commercial Department,
Infraestruturas de Portugal



— Panel 1

What is your experience with the RFP as an IM who is already using it?

Regulation 2017/2177 - a good challenge

- Quite extensive covered information, similar to a Network Statement;
- Some of it might be difficult – e.g. provision of indicative information on available capacity.

— Panel 1

What is your experience with the RFP as an IM who is already using it?

The RFP is a great aid because:

1. It's digital and fairly easy to use;
2. Has all content already organised, so that we don't miss anything;
3. We can directly insert the content, but we can also insert links to existing documents;
4. We can see other SF already published information, to get inspiration on best practices;
5. We know that it is a guaranty of compliance with Regulation 2017/2177.



Panel discussion 1

Frank Andreesen

Vice President, Logistics Advocacy,
Covestro GmbH



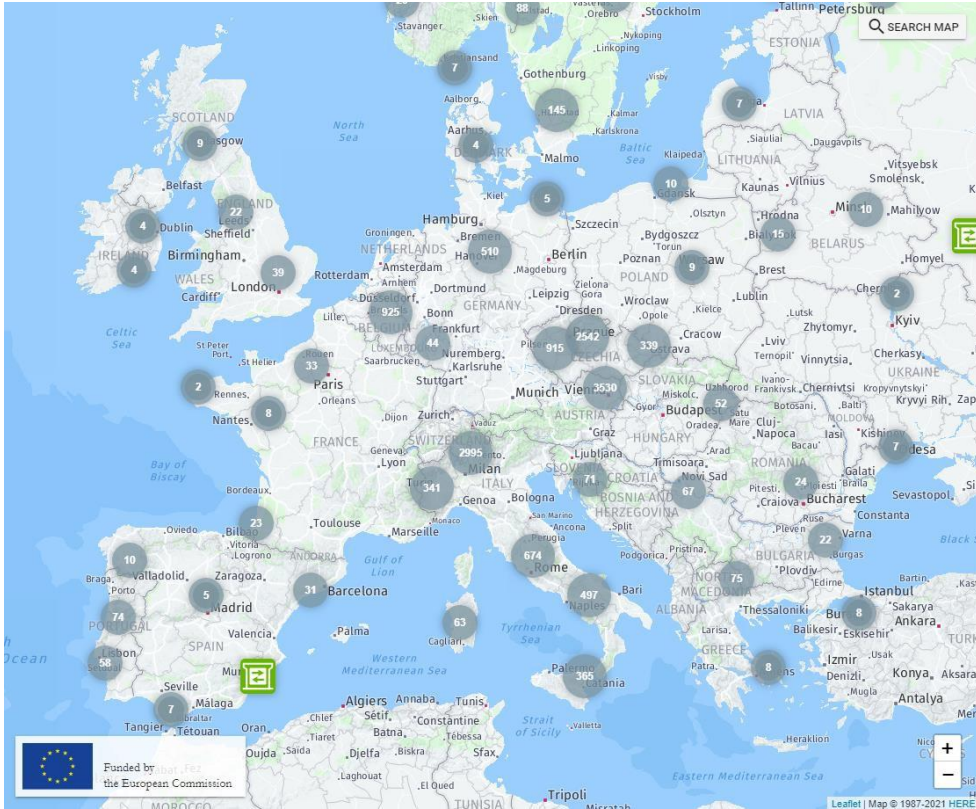
European Rail Facilities Portal Webinar

Webex Meeting, 15. June 2021

Frank Andreesen

Expectations and experience regarding the RFP

Potential value and information content to be obtained by shippers from Rail Facility Portal (RFP)



- Up-to-date actionable content drives value
- Shippers typically require their logistics service providers to know best „how to get from A to B“
- The RFP could be used by shipper to “scout” for optimisations and encourage their LSPs to pursue shift-to-rail opportunities
- Likewise, the RFP could enable identification of new logistics partners
- RFP solely understood to be a source of information (not a connectivity platform; not hosting any applications)
- Most likely shippers are not willing to pay for use of RFP (unless really compelling and superior in terms of additional information provided)
- Primary benefit perceived to be with LSPs

Source: [Rail Facilities Portal](#)



Thank you for your attention

Frank Andreesen
Vice President

covestro

covestro.com

Telefon
+49 214 6009 8120

Mobil
+49 175 3081202

frank.andreesen@covestro.com

Covestro GmbH
Logistics Advocacy

Kaiser-Wilhelm-Allee 60
51373 Leverkusen
Deutschland



Panel discussion 1

Gilles Peterhans

Secretary General,
UIP

UIP – INTERNATIONAL UNION OF WAGON KEEPERS

WHO DO WE REPRESENT ?

250



We represent **250** Wagon Keepers and Entities in Charge of Maintenance



14

National
Associations



200,000

50%
TONNE-KM

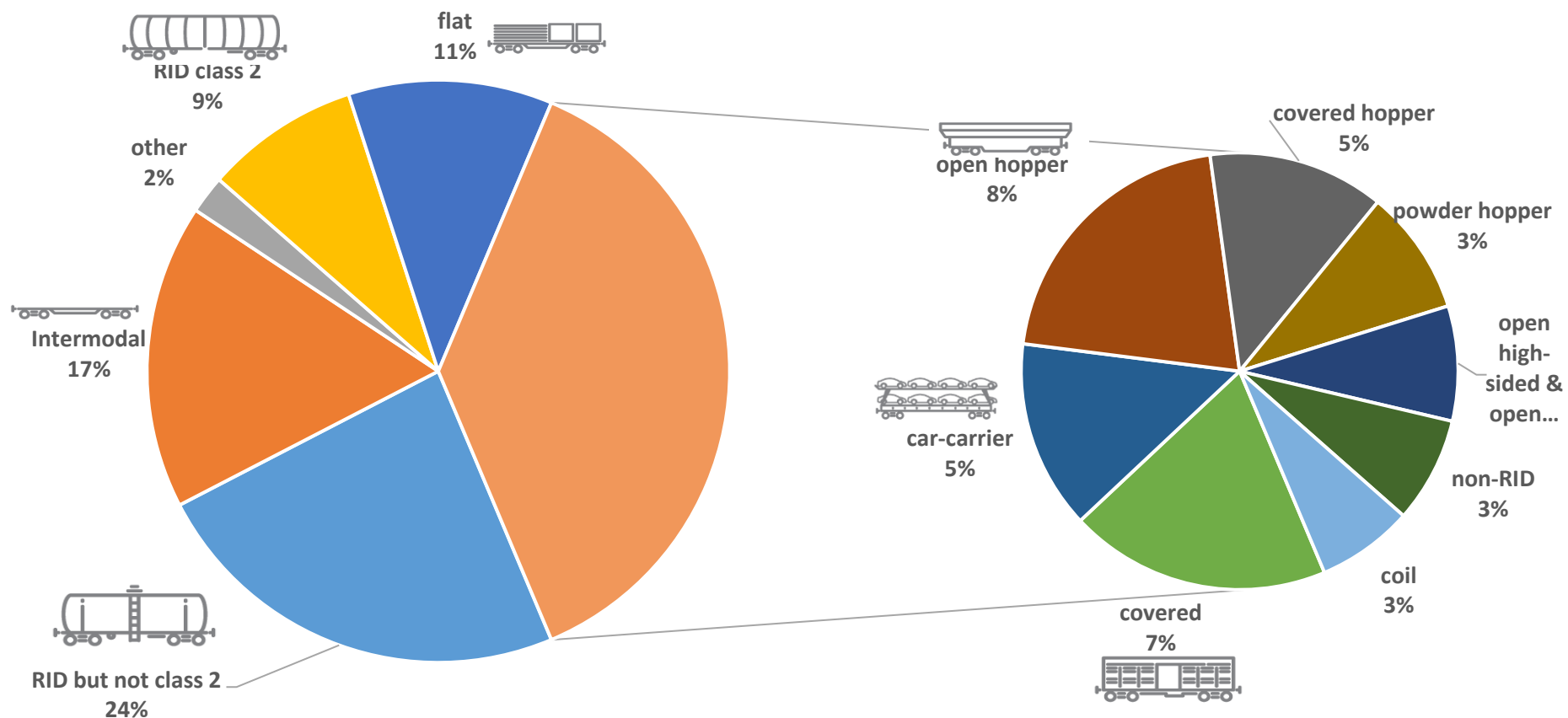
Our members have approximately **200.000** freight wagons that produce **50%** of tonne-km around Europe.

UIP – INTERNATIONAL UNION OF WAGON KEEPERS

WHAT DO WE REPRESENT ?

A 220'000 rail freight wagons fleet:

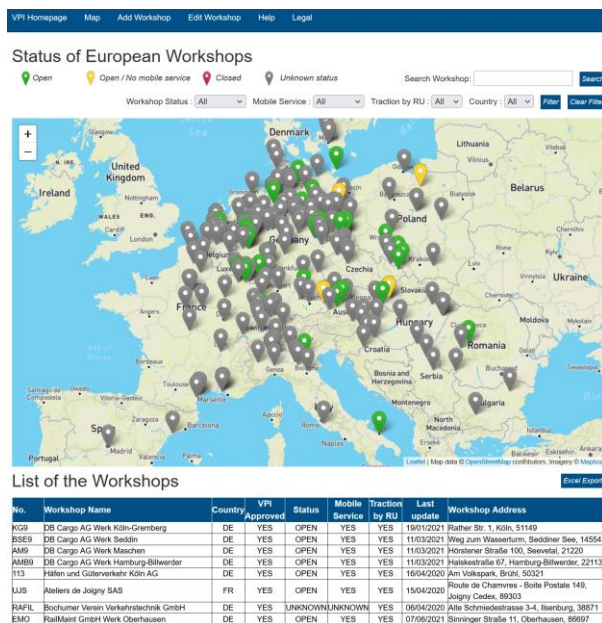
- 12bn € investments in rail freight wagons
- yearly 400-500mio € in new rolling stock
- > ~50% of European fleet



EXPECTATIONS AND EXPERIENCE REGARDING THE RFP

POTENTIAL USERS , BUSINESS TOOL

Our focus: maintenance workshops but also transshipment facilities (terminals, sidings,...)



EXPECTATIONS AND EXPERIENCE REGARDING THE RFP

POTENTIAL USERS , EUROPEAN BUSINESS TOOL

Our experience: RSRD² – wagon reference data hub

- Data provided under non-for-profit organisation
- Focus on data quality
- Ensure coherency with registers
- Simple web (SOAP) interfaces for data query
- Clear data responsibility
- Serves as master to feed other sector databases
- Ensure legal compliance
- 5 years of promotion at national level

RSRD² and the keepers make great efforts to assure a high data quality in the system



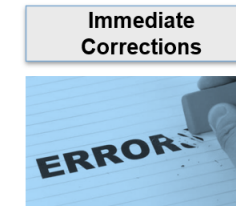
Data Quality Efforts



More than 95% of recorded wagons in RSRD² are uploaded via system interface



Keepers with system interface mostly update wagon data daily



Reported safety critical failures must be corrected within 1 working day



A multitude of data validations are performed during upload in RSRD²



Today: 80 wagon keepers, 130 data fields for more than 200'000 freight wagons
10mio queries/month



Panel discussion 1

Maria-Theresia Röhsler

Chair of IRG-Rail; Managing Director of
Schienen-Control GmbH, Austria

A decorative graphic on the left side of the slide, consisting of a complex network of interconnected nodes and lines. The nodes are represented by small circles in various shades of blue and grey, and the lines are thin, light blue. The network is dense and irregular, with many connections between the nodes, creating a web-like structure that extends across the left half of the slide.

IRG-rail

Independent
Regulators' Group - Rail

Webinar on Rail Facility Portal Panel 1: Expectations & Experience

15 June 2021

Maria-Theresia Roehsler

Experience with the Portal

- Regulating bodies...
 - are neither users of the Portal, nor part of its primary target group
 - have offered advice and expertise to the Portal from the beginning
- Experience with the Portal is limited; critical mass of SFOs joining has not been reached yet
- IRG-Rail welcomes transparent and easily accessible platform for information on all service facilities in Europe.

Expectations toward the Portal

- SFO's workload and effort, especially smaller ones, must be kept within reasonable limits
 - SFOs, who already publish their SF descriptions by other means legally available to them should not be forced to join the Portal
 - Importance of competition
 - Risks involved with limiting the number of information channels
 - No legal obligation → Portal will need to convince with content & performance
-



Panel discussion 1

Q&A

Panel discussion 1: Online poll

Which function of the RFP you find most important?

(please open the poll from the link in the webinar chat
or use the QR code below)





Panel discussion 2

How to make the RFP a common European business tool?



Panel discussion 2

Eric Lambert

Chairman of the Combined Transport Group,
UIC



Panel discussion 1

Filipe Pina

Head of Commercial Department,
Infraestruturas de Portugal



— Panel 2

As an IM, how do you see the potential of the RFP to become a common Europe business tool for service facility information?

RFP technically has the full potential, but depends on being successful on capturing interest from a relevant percentage of SF and customers.

IMs can more easily feed the RFP with our SF data, but we don't have much control on private SFs. We can promote its use through our business channels, but we feel that only the Regulators can enforce its use by the private SFs.



— Panel 2

As an IM, how do you see the potential of the RFP to become a common Europe business tool for service facility information?

In IP we see the main benefit of RFP on promoting new businesses, either towards completely new customers or towards existing customers that may wish to use other SFs.

We know that a tool like the RFP increases the confidence of the customers and normally “confidence” is a value that takes some time to conquer. The conclusion is that we need to be resilient knowing that this investment may take a little time to see results, but it’s definitively the right thing to do.



Panel discussion 2

Frank Andreesen

Vice President, Logistics Advocacy,
Covestro GmbH

How to make the RFP a common European business tool?

How do rail freight customers see the potential of the RFP to become a common business tool



About...

The European Commission (DG MOVE) has taken the initiative to set-up a common European web portal for information on all kinds of rail service facilities such as freight terminals, marshalling yards, maintenance facilities and fuelling stations.

A consortium built of HaCon, IBS, SGKV, Triona, UIC and UIRR has been appointed by DG MOVE to develop such a portal and elaborate governance strategies for a future permanent operation.

The "Rail Facilities Portal (RFP)" shall offer service facility operators a comfortable opportunity to publish information about their facilities in order to comply with the relevant EU regulations and to promote their facilities and services. At the same time, shippers, rail operators and other rail logistics companies shall get a single source of information that allows them to identify relevant facilities for the planning and optimisation of their transport chains.

In June 2020, RNE took over the ownership of the RFP from the European Commission. The operation / portal management of the RFP is carried out jointly by RNE and UIRR. The aim of this cooperation is to involve not only service facilities operated by the members of RNE, but also all other service facilities in Europe.

Source: [Rail Facilities Portal](#)

- Whether the RFP has a chance to become a common business tool depends on the value of its information content
- It will be important for information of to up-to-date, complete and meaningful
- Usage fee likely to prohibit acceptance
- The portal should not compete with service providers own information platform (no duplication of content – use links where appropriate)
- A single go-to place is useful, connecting currently spreaded information in a structured harmonized way
- Governance via neutral bodies (i.e. RNE and UIRR) highly welcome.



Panel discussion 2

Gilles Peterhans

Secretary General,
UIP



Panel discussion

Maria-Theresia Röhsler

Chair of IRG-Rail; Managing Director of
Schienen-Control GmbH, Austria

A decorative network diagram consisting of numerous small dark blue and light grey circular nodes connected by thin, light grey lines. The nodes are distributed across the slide, with a higher concentration on the left side, creating a web-like structure that suggests connectivity and a network.

IRG-rail

Independent
Regulators' Group - Rail

Webinar on Rail Facility Portal Panel 2: RFP as Business Tool

15 June 2021

Maria-Theresia Roehsler

RFP as tool for SFOs to meet legal obligations

- Portal 1 of 3 options for SFO to meet legal obligations
 - Assurance that the published content meets the regulatory requirements depends on the process chosen to review the information provided
 - Legal obligations and requirements that apply to operators may vary from member state to member state
 - SFOs may benefit from guidance provided by the Portal managers; but Portal will be in no position to guarantee SFOs having met their legal requirements
-

RFP's potential to become Europe's main tool for information on SF

- The market will decide RFP's potential
 - Users seem especially interested in comprehensive, up-to-date and easily accessible data
 - SFOs seem reluctant to submit data to the Portal if they already published SF descriptions or if submitting data increases their workload
 - Added value in guidance to – especially smaller – SFOs
-



Panel discussion 2

Vassil Zhikov

Policy Officer, DG MOVE,
European Commission



European Rail Facilities Portal

Potential for providing more services

*Vassil Zhivkov, DG MOVE C3
15 June 2021*

Applicants' needs

- What information to plan and organize rail freight services?
 - Infrastructure parameters
 - Technical characteristics and other key information for the rail facility
 - Services provided by the facilities
- What access to information on rail facilities?
 - Easy to find, search through, translate
 - Up to date
 - Equal access to information

Taking it further - digitalisation

- Why digital – easy access to information, machine readable, multiple use of the information
- Different pieces of one puzzle:
 - RINF – information on infrastructure parameters
 - Portal – rail facilities parameters and information on services
 - PCS (and national tools) – ordering capacity
- Next step
 - Real-time information on capacity in terminals
 - Planning train run and services with one digital tool (booking capacity)

Thank you



© European Union 2020

Unless otherwise noted the reuse of this presentation is authorised under the [CC BY 4.0](https://creativecommons.org/licenses/by/4.0/) license. For any use or reproduction of elements that are not owned by the EU, permission may need to be sought directly from the respective right holders.

Slide xx: **element concerned**, source: **e.g. Fotolia.com**; Slide xx: **element concerned**, source: **e.g. iStock.com**



Panel discussion 2: Online poll

Which function of the RFP you find most important?

(please open the poll from the link in the webinar chat
or use the QR code below)





Panel discussion 2

Q&A

RFP – Main Contacts

- **Feedback Form**

<https://railfacilitiesportal.eu/feedback>

- **Contact Address**

contact@railfacilitiesportal.eu

