

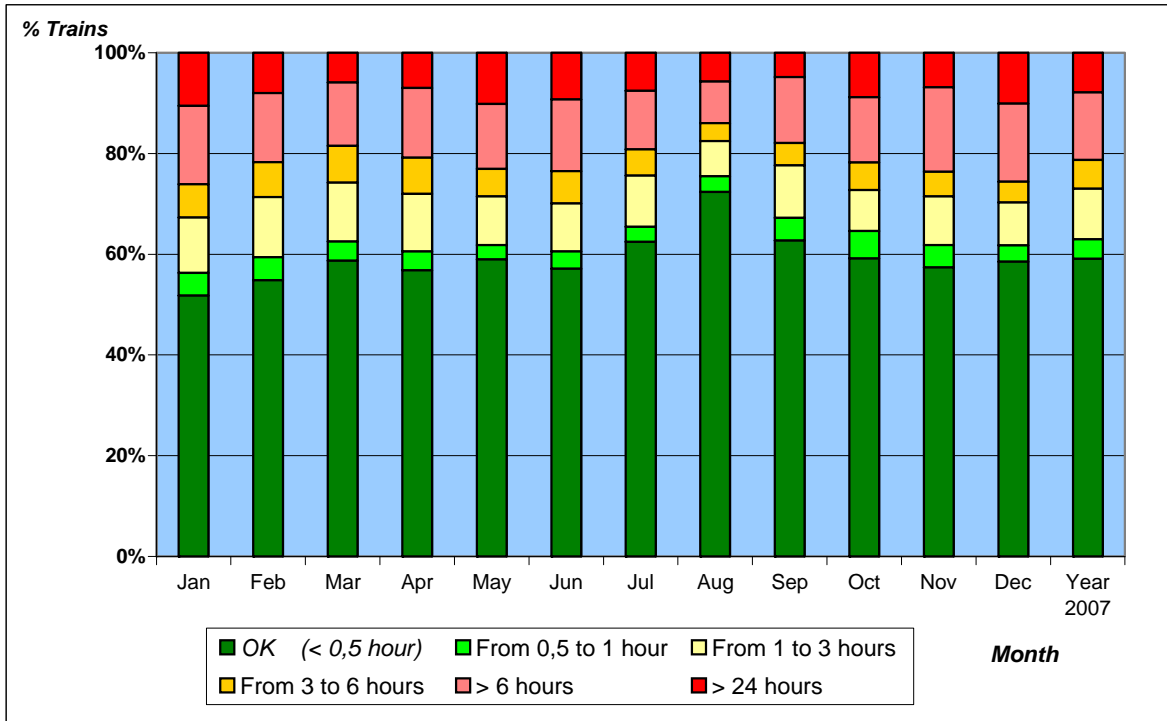


**WITHOUT BRENNER AND AUSTRIAN TRAFFIC**

**Punctuality / Delays**

Unaccompanied traffic with swap bodies, containers and trailers

**Year 2007: all observed axes (both directions)**



Trains 2007	Actual Trains	OK (< 0,5 hour)	From 0,5 to 1 hour	From 1 to 3 hours	From 3 to 6 hours	> 6 hours	> 24 hours
Jan	2083	1078	95	229	137	325	219
Feb	2026	1111	93	242	140	278	162
Mar	2192	1287	83	257	160	275	130
Apr	1923	1092	72	220	138	267	134
May	2020	1191	58	195	110	261	205
Jun	2015	1151	69	192	129	287	187
Jul	2124	1327	63	216	110	247	161
Aug	1632	1181	51	114	58	135	93
Sep	2061	1292	93	215	92	270	99
Oct	2067	1222	114	168	112	268	183
Nov	1646	944	73	159	81	276	113
Dec	1517	888	49	129	63	235	153
<b>Sum</b>	<b>23306</b>	<b>13764</b>	<b>913</b>	<b>2336</b>	<b>1330</b>	<b>3124</b>	<b>1839</b>
<b>Part %</b>	<b>100%</b>	<b>59%</b>	<b>4%</b>	<b>10%</b>	<b>6%</b>	<b>13%</b>	<b>8%</b>

Punctuality: all trains with less than 30 minutes over scheduled arrival time (first unit ready for pick-up)

Relations	Trains	%
Germany from/to Italy via Gotthard	5034	21%
Belgium from/to Italy	5020	21%
Germany from/to Spain	4810	21%
France from/to Italy	2792	12%
Italy from/to Netherlands	2581	11%
Belgium from/to Spain	1340	6%
Belgium from/to Switzerland	1079	5%
Western from/to Eastern Countries	650	3%
<b>Total</b>	<b>23306</b>	<b>100%</b>